

# ANNIKA GUSE

## ABOUT

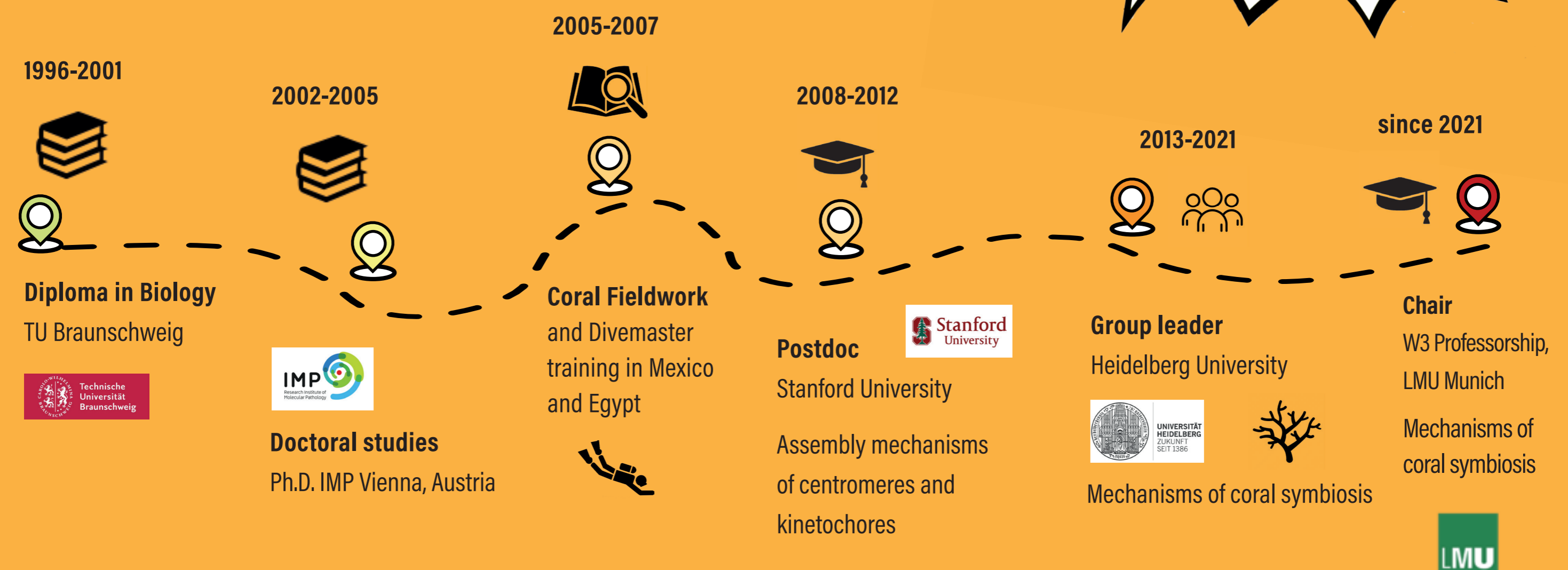
Annika Guse is a biologist aiming to bridge cell biology with ecology and evolution. She holds the Chair of Quantitative Organismic Networks at the LMU Munich Biocenter and with her team she investigates the underlying molecular mechanisms of coral-algal symbiosis, and how this partnership supports adaptation to the environment. Annika also co-founded the project !vamos, symbiosis! to create a partnership with the sea through the arts & science.



### WHAT TO TELL STUDENTS

*„Follow your interests. Don't aim to generate a 'perfect CV'. Connections between seemingly unrelated interests may appear at any moment..“*

## CV TIMELINE



## KEY EXPERIENCE

I love discovery! Particularly, using microscopes to explore the hidden worlds in our cells and by putting on my gear to dive into the magical underwater world. My research combines these passions and I feel very fortunate to be a researcher.

## MAJOR SCIENTIFIC FINDING

In my lab, we investigate how coral take up unicellular symbionts into their own cells, how the two cells coordinate their functions and exchange nutrients. Recently, we found that host cell immune suppression is key for the symbiont to escape expulsion via 'vomocytosis', a prerequisite for symbiont selection.

